



**Beijing EXQUISITE International Development Co., Ltd**

**PVC CONVEYOR BELT**

**PU CONVEYOR BELT**

**PE CONVEYOR BELT**

**SILICON CONVEYOR BELT**

**MANUFACTURER FROM 2005**

**AAA CREDIT**

**EXQUISITE QUALITY**

**LIFE LONG SERVICE**



[READ MORE](#)





## SMOOTH FINISHING WHITE PU CONVEYOR BELT 1.5MM

EXQUISITE INTERNATIONAL all the time insist on selecting durable polyester fabric as the core and environmental new pvc as material as special unique formulations, thus makes the belt work life plus 5%-15%, it is outstandingly reducing the user's cost and increase the productivity rate 10%-20%, guarantee user's projects.

### GENERAL CHARACTERISTICS

- \*anti-oil anti-grease      \*moisture proof      \*low extension      \*anti-corrosion
- \*Non-toxic, non-odorless      \*high tensile strength
- \*strong bonded, no shedding      \*anti high and low temperature

ORIGIN: SHANGHAI, CHINA

MATERIAL: PVC

STANDARD: YES

SAMPLES: YES & FREE

DELIVERY: 15-25 DAYS

SERVICE: LIFE-LONG

CUSTOM: YES

#### ➤ **BELT Structure**

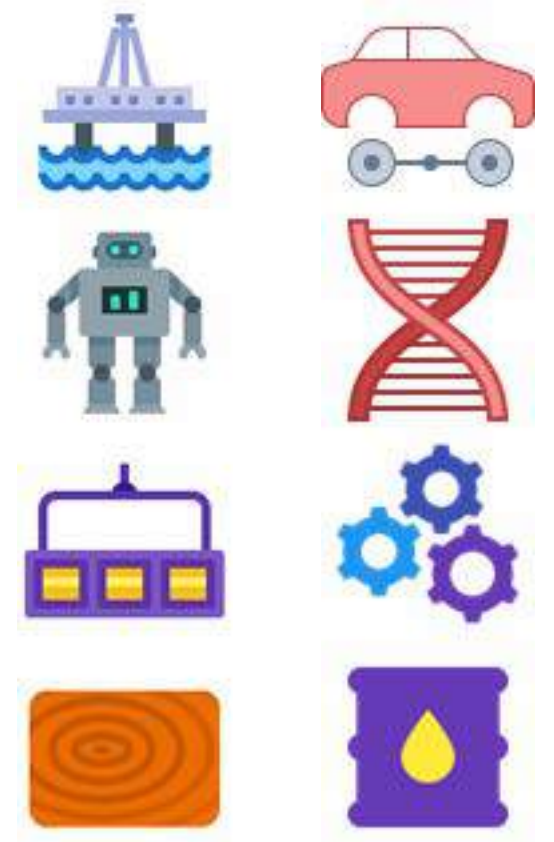
No. of Ply: 2  
Fabric Features: 1 ply fabric, 1 ply pvc  
Top Surface: PU  
-Color: White  
-Thickness: 0.6 mm  
-Hardness: 90 Shore A  
Surface: Q Struc  
Bottom Surface: Conductive fabric  
Total Thickness: 1.5mm  
Weight: 1.0 kg/m<sup>2</sup>  
Anti-static: Yes  
Maximum width: 3500mm

#### ➤ **Minimum Pulley Diameters**

Positive Operation: 30mm  
Reverse Operation: 60mm

#### ➤ **Conveyor Frame Characteristics**

Trundle Bed: YES  
Metal Groove: YES  
Plate Roller to Support: YES  
Inverted Wheel to Support: NO  
Special Mixed Inverted Wheel Groove: NO  
Reverse Slide: YES





## SMOOTH FINISHING WHITE PU CONVEYOR BELT 1.5MM

### ➤ Belt Strength

fracture tension: 160 daN / cm  
recommended maximum working tension: 12 daN / cm  
working tension under extension rate of 1%: 8 daN / cm

### ➤ Joint Method

hot Melt: FOF  
buckle: K1 B2/Z or Inox

### ➤ Operating Temperature: -20℃ to 80℃

temperature± 30% influenced by working time,  
weight of material, different factors in the environment

### ➤ Bottom Cover Friction Coefficient

Stainless steel, surface: 0.18  
Stainless steel, semi-glossy: 0.18  
Stainless steel, heat lamination surface: 0.20  
Scroll Plate: 0.18  
Glossy plastic board: 0.23

### Special Executions

The test data under the environment: + 25 °C, 70% relative humidity. And in other circumstances, the data are subject to change,

### ➤ EXQUISITE INTL does not specify more.



<http://www.exquisiteconveyorbelt.com/col.jsp?id=109>

Instruction and Maintenance for light duty belt.pdf

EXQUISITE INTL Quality Warranty Agreement.pdf

EXQUISITE INTL belt catalog.pdf

...

### Beyond 10 Years

Established from 2005, widely used into kinds of industries,  
export 30 countries and regions, build the fine reputation in North China.

### Three "EXQUISITE"

Exquisite customization+exquisite quality+exquisite service.

Quality is our foundation, service is our promise

### Professional Service Team

Free technical support for life long, 7\*24H service.

Engineers and Sales graduate famous universities or institutes.

Our Export Agency: JIANGSUCROSS-BORDER E-COMMERCIAL SERVICE CO., LTD,  
the Listed Company in Hongkong, high efficient to finish all the export process  
by lower cost in shorter time.







**Beijing EXQUISITE International Development Co., Ltd**

**PVC CONVEYOR BELT**

**PU CONVEYOR BELT**

**PE CONVEYOR BELT**

**SILICON CONVEYOR BELT**

**WE ARE PLEASED TO HELP YOU!**



- EXQUISITE CUSTOMIZATION
- EXQUISITE QUALITY
- EXQUISITE SERVICE

Beijing Office: Rm 560, Aviation Bldg, Daxing CBD,  
Beijing, P. R. China, 100162

Tel/Fax: +86-10-612 758 77

Email: [info@exquisiteconveyorbelt.com](mailto:info@exquisiteconveyorbelt.com)

Factory Address: Jigao Road, Minhang Dist, Shanghai, China  
Tel/Fax: +86-21-629 571 76

Sales Manager Mr. Edward Li

Mobile Phone: +86 188 111 591 71

Email: [edward@exquisiteconveyorbelt.com](mailto:edward@exquisiteconveyorbelt.com); [edwardexq@yeah.net](mailto:edwardexq@yeah.net)

Skype: [@edwardexq](https://www.skype.com/user/edwardexq)

Light Duty Conveyor Belt Expert:  
<http://www.exquisiteconveyorbelt.com/>

One of biggest ECER B2B Platform in China  
<http://exquisiteintl-com.sell.ecer.com/>

Made-in-China B2B Platform  
<http://www.made-in-china.com/showroom/jimmylisuc>

**VISIT US**