



Beijing EXQUISITE International Development Co., Ltd

PVC CONVEYOR BELT

PU CONVEYOR BELT

PE CONVEYOR BELT

SILICON CONVEYOR BELT

MANUFACTURER FROM 2005
AAA CREDIT
EXQUISITE QUALITY
LIFE LONG SERVICE



[READ MORE](#)

[HTTP://WWW.EXQUISITECONVEYORBELT.COM/](http://www.exquisiteconveyorbelt.com/)



CAPSULE STUD GREEN PVC CONVEYOR BELT 5.0MM

EXQUISITE INTL all the time insist on selecting durable polyester fabric as the core and environmental new pvc as material as well as special unique formulations, thus makes the belt work life plus 5%-15%, it is outstandingly reducing the user's cost and increase the productivity rate 10%-20%, guarantee user's projects.

Green

GENERAL CHARACTERISTICS

- *anti-oil anti-grease *moisture proof *low extension *anti-corrosion
- *Non-toxic, non-odorless *high tensile strength
- *strong bonded, no shedding *anti high and low temperature

ORIGIN: SHANGHAI, CHINA

MATERIAL: PVC

STANDARD: YES

SAMPLES: YES & FREE

DELIVERY: 15-25 DAYS

SERVICE: LIFE-LONG

CUSTOM: YES

➤ BELT Structure

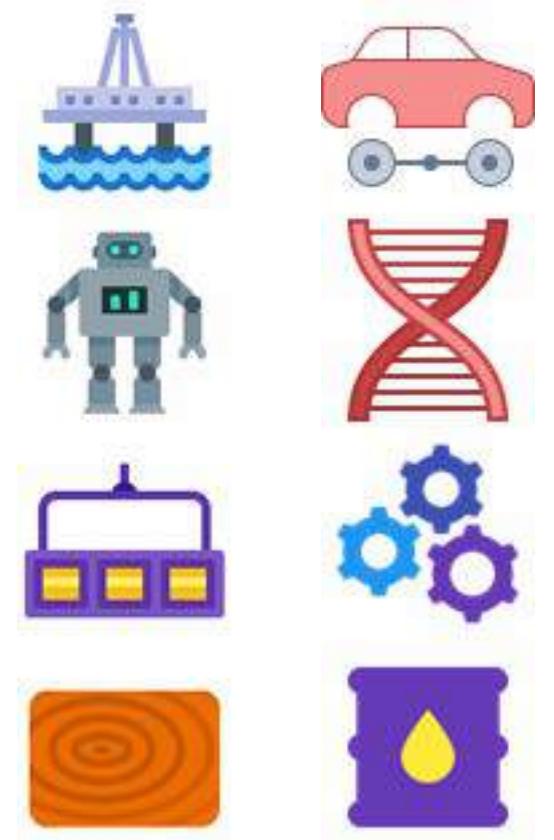
No. of Ply: 2
Fabric Features: 2 ply fabric, 2 ply pvc
Top Surface: PVC
-Color: Green
-Thickness: 2.0 mm
-Hardness: 72 Shore A
Surface: Q Struc
Bottom Surface: Fabric
Total Thickness: 5.0mm
Weight: 4.5 kg/m²
Anti-static: Yes
Maximum width: 3500mm

➤ Minimum Pulley Diameters

Positive Operation: 80mm
Reverse Operation: 100mm

➤ Conveyor Frame Characteristics

Trundle Bed: YES
Metal Groove: YES
Plate Roller to Support: YES
Inverted Wheel to Support: NO
Special Mixed Inverted Wheel Groove: NO
Reverse Slide: YES





CAPSULE STUD GREEN PVC CONVEYOR BELT 5.0MM

➤ Belt Strength

fracture tension: 280 daN / cm
recommended maximum working tension: 14 daN / cm
working tension under extension rate of 1%: 12 daN / cm

➤ Joint Method

hot Melt: FOF
buckle: K1 B2/Z or Inox

➤ Operating Temperature: -20℃ to 80℃

temperature± 30% influenced by working time,
weight of material, different factors in the environment

➤ Bottom Cover Friction Coefficient

Stainless steel, surface: 0.18
Stainless steel, semi-glossy: 0.18
Stainless steel, heat lamination surface: 0.20
Scroll Plate: 0.18
Glossy plastic board: 0.23

Special Executions

The test data under the environment: + 25 °C, 70% relative humidity. And in other circumstances, the data are subject to change,

➤ EXQUISITE INTL does not specify more.



<http://www.exquisiteconveyorbelt.com/col.jsp?id=109>

Instruction and Maintenance for light duty belt.pdf

EXQUISITE INTL Quality Warranty Agreement.pdf

EXQUISITE INTL belt catalog.pdf

...

Beyond 10 Years

Established from 2005, widely used into kinds of industries,
export 30 countries and regions, build the fine reputation in North China.

Three "EXQUISITE"

Exquisite customization+exquisite quality+exquisite service.

Quality is our foundation, service is our promise

Professional Service Team

Free technical support for life long, 7*24H service.

Engineers and Sales graduate famous universities or institutes.

Our Export Agency: JIANGSUCROSS-BORDER E-COMMERCIAL SERVICE CO., LTD,
the Listed Company in Hongkong, high efficient to finish all the export process
by lower cost in shorter time.





Beijing EXQUISITE International Development Co., Ltd

PVC CONVEYOR BELT

PU CONVEYOR BELT

PE CONVEYOR BELT

SILICON CONVEYOR BELT

WE ARE PLEASED TO HELP YOU!

VISIT US

[HTTP://WWW.EXQUISITECONVEYORBELT.COM/](http://www.exquisiteconveyorbelt.com/)



- EXQUISITE CUSTOMIZATION
- EXQUISITE QUALITY
- EXQUISITE SERVICE

Beijing Office: Rm 560, Aviation Bldg, Daxing CBD,
Beijing, P. R. China, 100162

Tel/Fax: +86-10-612 758 77

Email: info@exquisiteconveyorbelt.com

Factory Address: Jigao Road, Minhang Dist, Shanghai, China
Tel/Fax: +86-21-629 571 76

Sales Manager Mr. Edward Li

Mobile Phone: +86 188 111 591 71

Email: edward@exquisiteconveyorbelt.com; edwardexq@yeah.net

Skype: [edwardexq@yeah.net](https://www.skype.com/user/edwardexq)

Light Duty Conveyor Belt Expert:

<http://www.exquisiteconveyorbelt.com/>

One of biggest ECER B2B Platform in China

<http://exquisiteintl-com.sell.ecer.com/>

Made-in-China B2B Platform

<http://www.made-in-china.com/showroom/jimmylisuc>